

Green Space Romeo

Embrace Nature Celebrate History

www.GreenSpaceRomeo.org

Ms. Vicki Laseke
Executive Director of Business Services
Romeo Community Schools
316 North Main Street
Romeo MI 48065

March 13, 2025

Dear Ms. Laseke:

Please find enclosed Green Space Romeo's Proposal to Purchase the property at 297 Prospect Street.

We are grateful to Romeo Community Schools (RCS) Board of Education and the school administration for the opportunity provided by the Board's resolutions in 2023 and 2024 that paused sale of the property. This Proposal is the result of those actions by the Board. We commend the Board of Education for its commitment to the RCS community as expressed in its mission statement to embrace "*community while engaging, educating and empowering students to inspire the future.*"

Green Space Romeo offers an opportunity to further Romeo Community Schools' vision to forge "*pathways through academic exploration guided by... passions of our students, dynamic learning environments, invested community advocates.*" Green Space Romeo, its Board of Directors, supporters and volunteers, are your most invested community advocates and we are committed to engaging the passions of your students and contributing to the dynamic learning environments in our RCS community.

Our Proposal offers a significant dollar amount to the Romeo Community Schools, a commitment to preserve the three parcels comprising 297 Prospect Street for the benefit of the community and RCS in perpetuity, and a feasible and sustainable plan for developing and maintaining the property as an accessible public green space and an outdoor learning environment.

In addition to the required documents, we enclose three appendices that provide additional information and context for our Proposal:

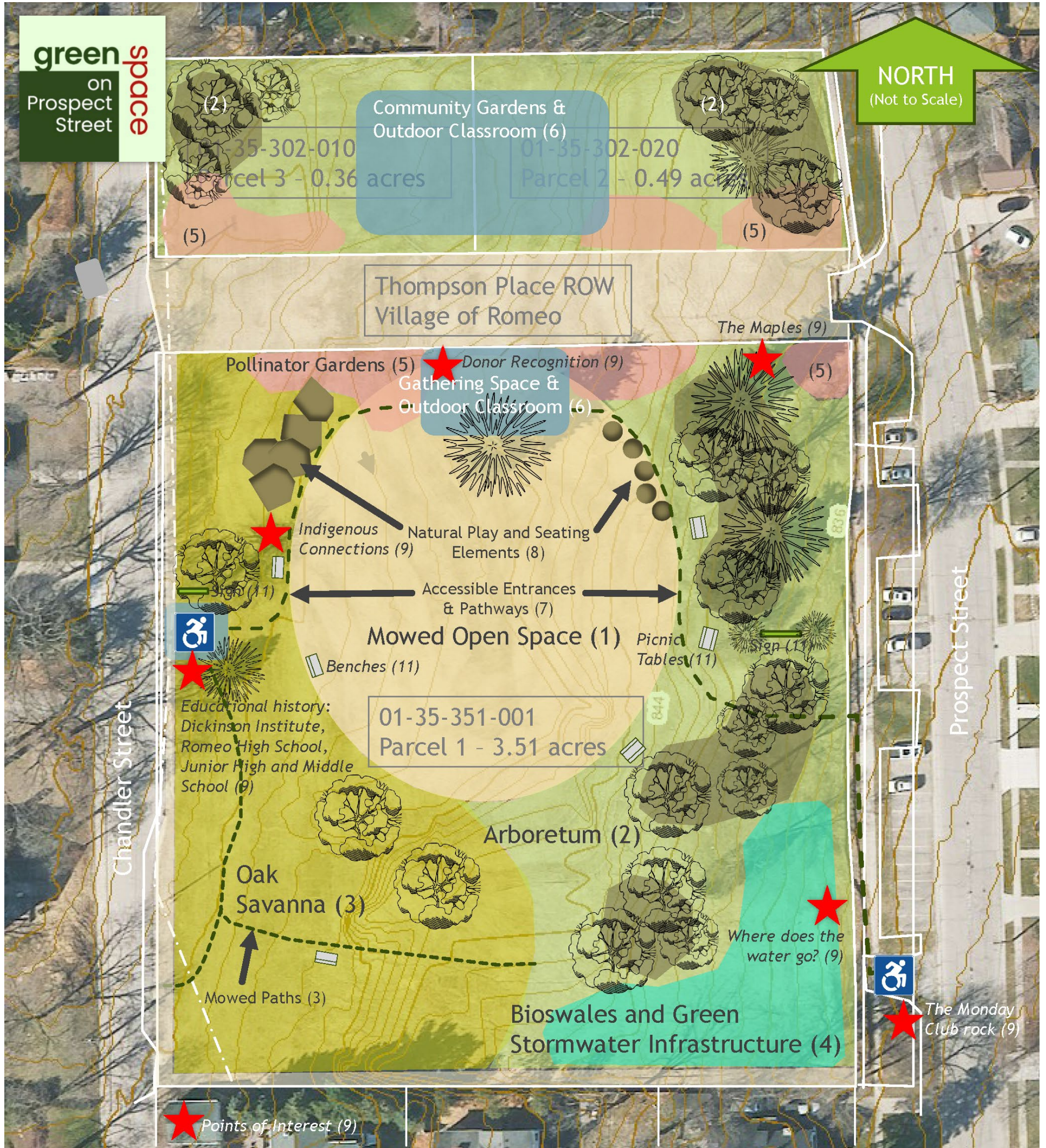
- Appendix A – Organizational Structure
- Appendix B – Community Support
- Appendix C – Educational Opportunities

On behalf of the Green Space Romeo Board of Directors and the community members who support this vision, thank you for this opportunity. Please contact me with any questions.

Best regards,

Donna Folland

Donna Folland, Chair
Green Space Romeo



Numbers in parentheses refer to zone descriptions on the reverse side

About Green Space on Prospect Street

Green Space on Prospect Street (GSOPS) is an all-volunteer organization focused on the acquisition and preservation of the property at 297 Prospect Street as public green space for the benefit of all community members. Public green space promotes health, wellness and equity in our community, making it a place where people want to live and visit. 297 Prospect Street has always been a place of learning, starting with the Dickinson Institute in 1855, followed by the Romeo High School, then Junior High School and finally the Middle School, which was removed in 2021. We envision planting trees, re-introducing nature and installing low-maintenance improvements to create a space where kids can play and learn, and we can enjoy nature.

Guiding Principles and Green Space Zones

The guiding principles align the planning, development and maintenance of 297 Prospect Street with the Green Space purpose. The Concept Site Plan identifies zones within the green space that have diverse components and uses and that create a space that maximizes benefits to the public, the community and the environment.

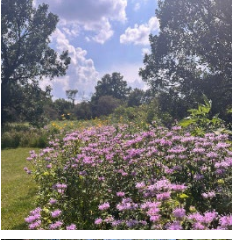
- | | |
|---|---|
| <ul style="list-style-type: none"> A. Welcoming to everyone and universally accessible to the extent possible. B. Environmentally sustainable, integrating best practices that contribute to the overall resilience of the community C. Fiscally sustainable with low-maintenance and low-cost improvements D. Trees and plants native to southeast Michigan within a certified arboretum E. Habitat for birds, pollinating insects and other wildlife | <ul style="list-style-type: none"> F. Space for exercise and activities that enhance wellness G. Space for kids to play and grow H. Places to socialize and relax in nature I. Green infrastructure to manage stormwater J. Outdoor education resource that stimulates a sense of wonder and exploration K. Property history remembered, honored and shared L. Complement the historic Village |
|---|---|

Please join our community! Visit us at <https://www.greenspaceroomeo.org/> or contact us at GreenSpaceRomeo@gmail.com or (248) 736-1649

Green Space Zone Descriptions



1) Mowed Open Space – Mowed open space is the baseline condition for the property. As development of native landscapes and other improvements proceeds, we will retain a large central area of mowed open space for unstructured play and along the edges of native landscapes to provide definition and clarify the intentional nature of the landscapes. Uses of this zone will include open unstructured play by all ages, pick-up soccer and other field games, kite-flying, picnicking, walking, exercising by individuals and groups, yoga, tai-chi and other classes.



2) Arboretum – The arboretum will establish a native tree canopy and shrub layer that augments the existing trees on the site and create an attractive traditional park setting. The arboretum will also act to integrate this area with the preexisting, mature urban forest canopy which covers most of the surrounding village, as well as help to ensure a sustained tree canopy in this area as existing trees continue to age and eventually decline. Uses of this zone will include traditional park activities such as strolling, picnicking, relaxing, and unstructured play. As a certified arboretum (<https://www.arbnet.org/>) with a minimum of 25 types of woody plants, it will create an outdoor education resource and diverse volunteer opportunities.



3) Oak Savanna with Mowed Pathways – This mixture of prairie and forest represents a currently endangered ecosystem that was once abundant throughout southern Michigan. Establishment of this habitat is an opportunity to share information about the pre-industrial ecological regimes which shaped the landscapes present in our region, as well as how the Anishinaabe acted as stewards to both care for and utilize these lands. Oak savannas also provide habitat for many dozens of bird species and many hundreds of pollinator species. Mowed paths will invite visitors into this diverse habitat and engender a sense of adventure and exploration.



4) Bioswales and Green Stormwater Infrastructure (GSI) – Bioswales are a form of GSI. Stormwater runs off roads, parking lots and lawns into the storm sewer and eventually into the Clinton River, picking up sediment and pollutants along the way. Bioswales intercept stormwater with plant material, infiltrating a portion into the ground, evaporating a portion of it into the air, and releasing a portion of it slowly back into the sewer system after it has been filtered through the plant material. The installation of bioswales and other GSI will manage runoff issues on the site and demonstrate the best practices that help communities be more resilient to the changing climate.



5) Pollinator Gardens – Pollinator gardens contain a diverse range of native flowering plants. Diversity provides a varied diet for a wide range of pollinators and prevents pests and other problems that plague monocultures. A great pollinator garden has overlapping bloom times, providing food for pollinators throughout the growing season. Native plants are selected that are well-adapted to the local environment and therefore don't require much water or care. Pollinator gardens are another component of GSI by filtering stormwater runoff and by having deep root structures that prevent soil erosion.



6) Gathering Space, Outdoor Classroom and Community Gardens – Gathering spaces invite you to sit and chat or just spend some quiet moments reading or enjoying the scenery. Gathering spaces could also be used for story time with kids, board games with friends, or informal outdoor meetings. This area will host the more developed aspects of the green space such as raised bed community gardening, tool shed, small restroom, pergola or shade structure, and active spaces designed around use of the park as an outdoor classroom. Selection of features will depend on input from the community and from the users of the green space and their experiences.



7) Accessible Entrances and Pathways – The Green Space on Prospect Street is for people – neighbors, people who reside within walking distance, families who drive there for a picnic or to meet friends, and educators bringing their students for outdoor education. Accessible entrances and pathways welcome people of all abilities to come in and enjoy the green space. Entrances and Pathways will be designed to meet the guidelines set by the Architectural Barriers Act (ABA) of 1968.



8) Natural Play and Seating Elements – While the accessible pathways welcome everyone in, the natural play and seating elements invite play and adventure off the path. The components are generally boulders and logs, which may be connected by climbing and balancing elements, and are intended to stimulate imaginative play as well as develop strength and motor skills. They are ideal for a multi-generational experience, with a parent or grandparent strolling on the path and children playing alongside. They also provide additional places to sit and be surrounded by nature.



9) Points of Interest – We have an opportunity to bring the rich history of the site and the region to the forefront, as well as the science that underlays the planned landscape. There are many ways we can convey information to the visitor at the points of interest – interpretive signage with verbal and tactile information, posted QR codes that point to a relevant web page or video or the use of augmented reality which uses special glasses or a cell phone app to display information or images superimposed on the visual field. Use of multiple methods is important to meet the needs of various ages and abilities of the visitors.



10) Sustainable Maintenance and Operation – We will strive for zero emissions by replacing the use of gas-powered mowers and other grounds equipment with electric versions and explore alternative energy such as wind and solar. Parks and green spaces are in the front line for counteracting urban heat effects by increasing the tree canopy. A study conducted by Trust for Public Land in 2020 revealed that areas within a 10-minute walk of a park are as much as 6 degrees cooler than areas outside that range. The pockets of forest and native plants we establish will sequester carbon, slow down runoff during storm events, and provide a shaded area of respite from hot days.



11) Amenities – Throughout the green space we will place amenities such as benches and picnic tables that will invite people to spend time on their own, with a friend or walking buddy, or with their family. Signs at the west and east entrances will identify the green space to the public and interpretive signs at the Points of Interest will communicate science and history and recognize our donors and partners. Determined by community engagement and as funding permits, many other enrichments could be considered such as restrooms, art installations, murals, solar lighting and Wi-Fi.



We are grateful for the over 200 donors and volunteers who make Green Space on Prospect Street possible. Special thanks to our major partners and supporters (left).

CLINTON RIVER WATERSHED COUNCIL

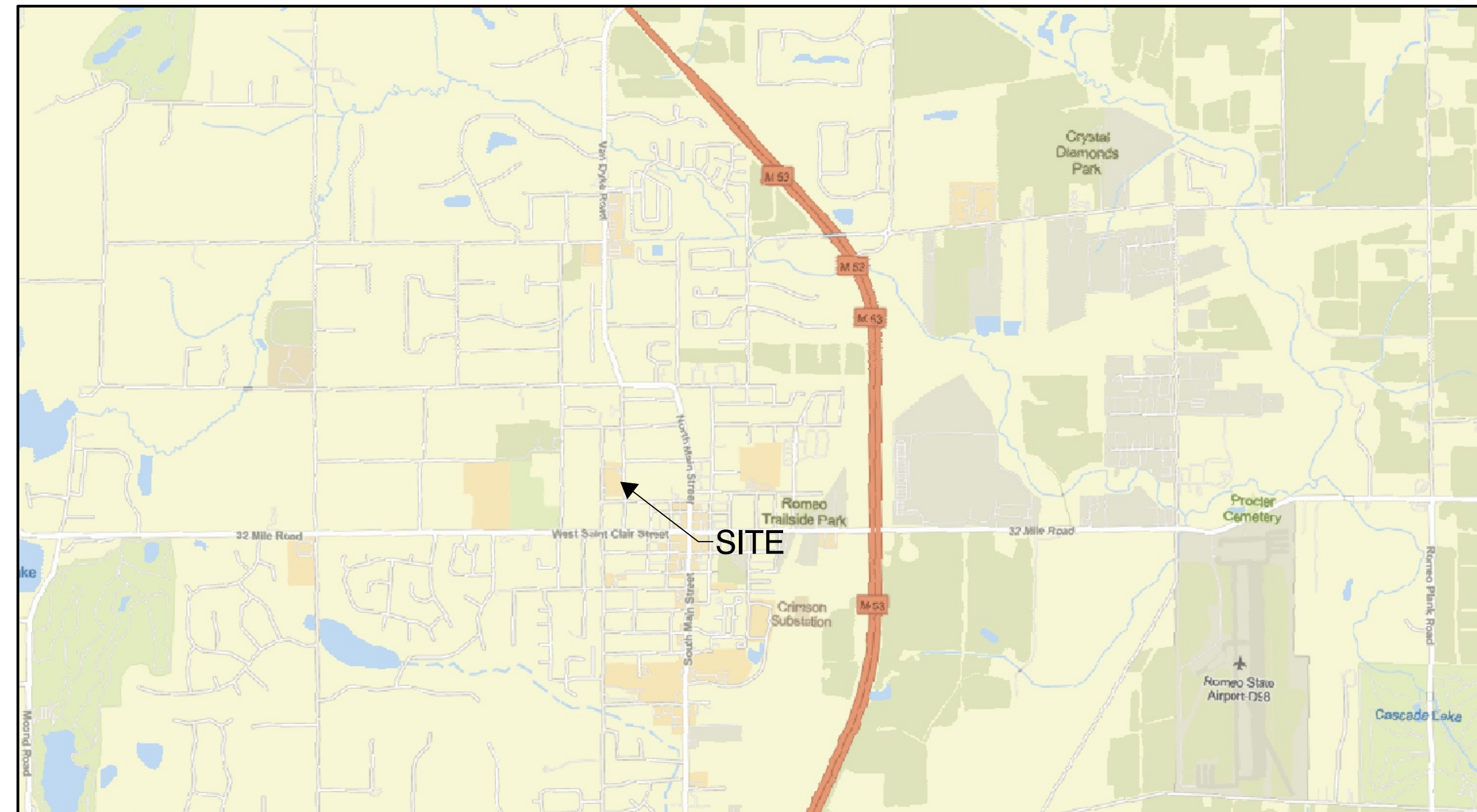
CRWC GREEN INFRASTRUCTURE SUPPORT PROSPECT STREET BIOSWALE

MACOMB COUNTY

MICHIGAN

SHEET INDEX:

- C1.0 - COVER SHEET
- C1.1 - DESIGN PLAN
- C1.2 - DEMOLITION PLAN
- C1.3 - PLANTING PLAN



PROJECT DESIGN TEAM:



Drummond Carpenter, PLLC

CORPORATE HEADQUARTERS:
630 N. WYMORE SUITE 370
MAITLAND, FL 32751
PHONE: (407) 417-1220

MICHIGAN OFFICE:
501 AVIS DRIVE
ANN ARBOR, MI 48108
PHONE: (248) 763-4099

www.drummondcarpenter.com

CLIENT:
CLINTON RIVER WATERSHED COUNCIL
1115 W AVON RD
ROCHESTER HILLS, MI 48309
248.601.0606



Know what's below.
Call before you dig.

ARTISTIC RENDERING OF BIORETENTION AND POLLINATOR GARDEN



ISSUE DATE	ISSUED FOR
11/14/2024	90% PLANS
DRAWN	CL
CHECKED	RP
APPROVED	DC

PLANTING LEGEND	AREA
BLACK-EYED SUSAN (RUDEBECKIA FULGIDA) 742 SF	
LITTLE BLUESTEM (SCHIZACHYRIUM SCOPARIUM) 872 SF	
BLUE LOBELIA (LOBELIA SIPHILITICA) 390 SF	
BEE BALM (MONDARDA DIDYMA) 324 SF	

NOTE:
PLANTS SHALL BE SPACED AT 24" O.C.

NATIVE POLLINATOR SEED MIX NOTES:

1. MIXTURE OF 70% FORBS AND 30% GRASSES RECOMMENDED OF MICHIGAN NATIVE SPECIES AT 10 LBS/ACRE APPLICATION RATE. SEED MIXED WITH 15 LBS/ACRE OF ANNUAL COVER CROP FOR ESTABLISHMENT.



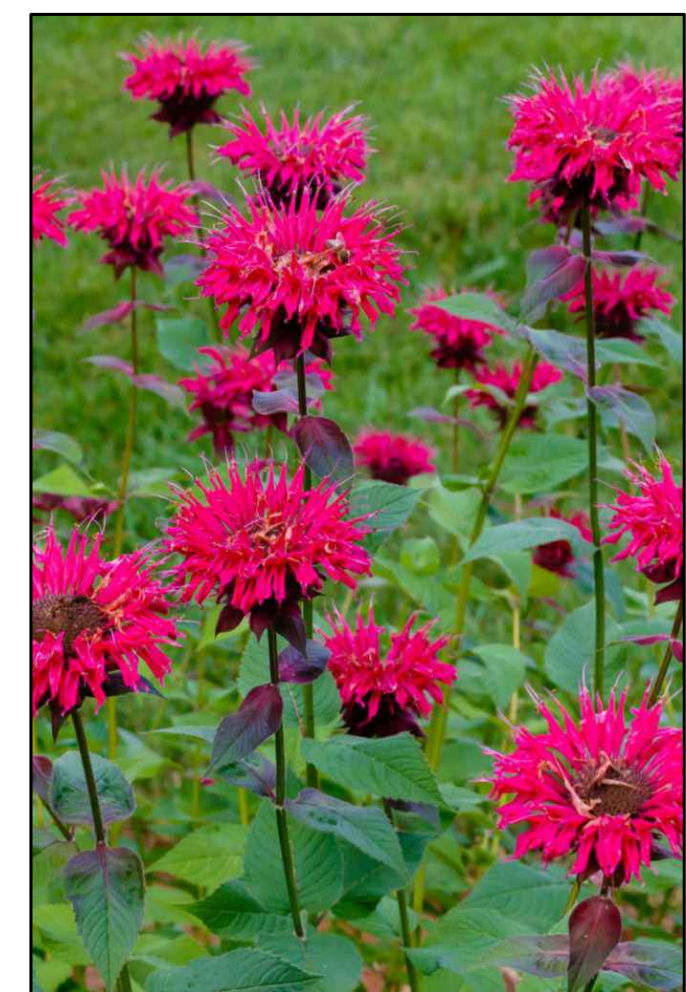
BLACK-EYED SUSAN (RUDEBECKIA FULGIDA)



LITTLE BLUESTEM (SCHIZACHYRIUM SCOPARIUM)



BLUE LOBELIA (LOBELIA SIPHILITICA)



BEE BALM (MONDARDA DIDYMA)



CORPORATE HEADQUARTERS
630 N. WYMORE SUITE 370
MAITLAND, FL 32751
PHONE: (248) 763-4099
www.drummondcarpenter.com

PROJECT
Prospect Street Bioswale

Romeo, Michigan

SHEET
Planting Plan

PROJECT NUMBER
0276

SHEET NUMBER
C1.3



NOT FOR CONSTRUCTION